

Item-E led street light specification

Products Images and Size

30W

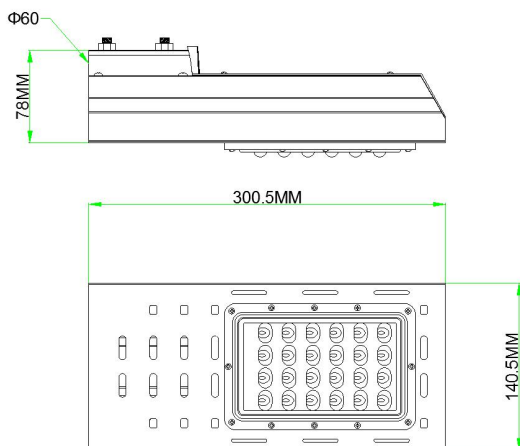


Application areas

Widely used in all kinds of road lighting: express way, Trunk Road and Welcome Road, main roads to government agencies and large public buildings, road of downtown and Business center secondary main road, branch, residential roads and sidewalk, also can be used in general building, square, goods yard, and scenic spot.



Product size



Technical data

Item No	Power	LED Source	LED Qty	Input Vol	Power Factor
MS-SL30W-E01	30W	CREE-XTE Chip	24 PCS	AC100-277V	≥0.95

Beam angle	CCT	CRI	Material	Lumen	Certificate	IP	Warranty
80*140°	3000~6000K	75	Aluminium	120~130lm/W	CE ROHS	IP65	5 years

50W

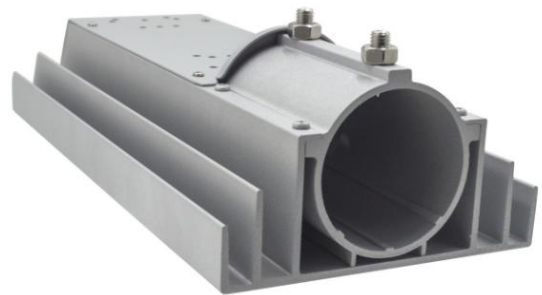
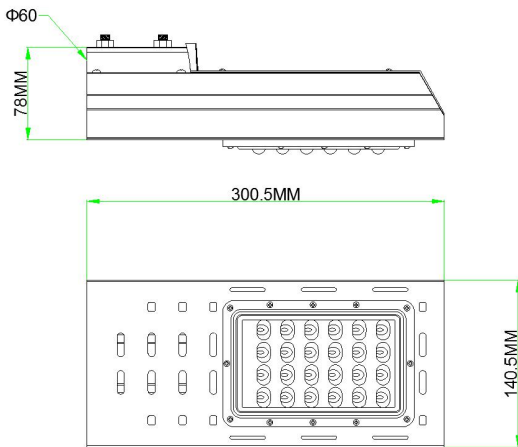


Application areas

Widely used in all kinds of road lighting: express way, Trunk Road and Welcome Road, main roads to government agencies and large public buildings, road of downtown and Business center secondary main road, branch, residential roads and sidewalk, also can be used in general building, square, goods yard, and scenic spot.



Product size



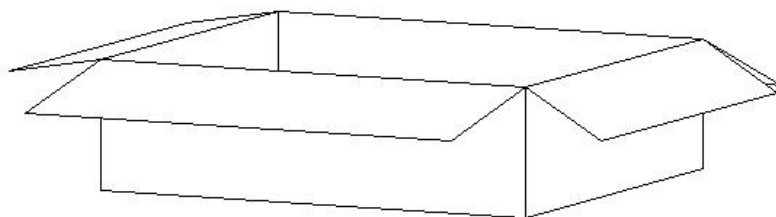
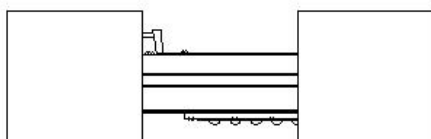
Technical data

Item No	Power	LED Source	LED Qty	Input Vol	Power Factor
MS-SL50W-E02	50W	CREE-XTE Chip	24 PCS	AC100-277V	≥0.9

Beam angle	CCT	CRI	Material	Lumen	Certificate	IP	Warranty
80*140°	3000-6000K	75	Aluminium	120~130lm/W	CE ROHS	IP65	5 years

Package

Item	MS-LSP50W-C01	MS-LSP150W-C03
Package Qty	16 PCS	16 PCS
GW	27 KG	30 KG
Inner Box Size(mm)	650*440*330MM	650*440*330MM



Installation Instructions

Attention:

- 1) Be sure disconnect power before installing, don't construction with electricity.
- 2) Product working voltage is AC100~277V,50/60Hz, Please do not exceed the working voltage range.
- 3) Input product line, brown is **L**, blue is **N**, yellow-green is **GND**.
- 4) Be sure wiring is closed and prevent leakage, when installing.
- 5) The lamp can not be used in violation of any fire regulations.

