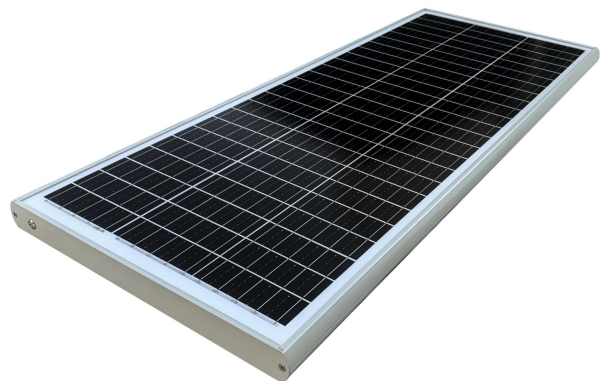
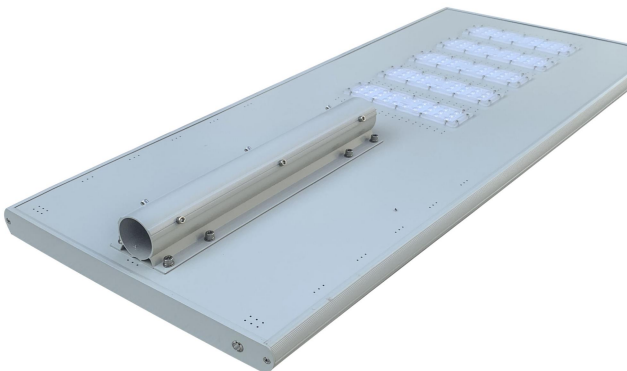
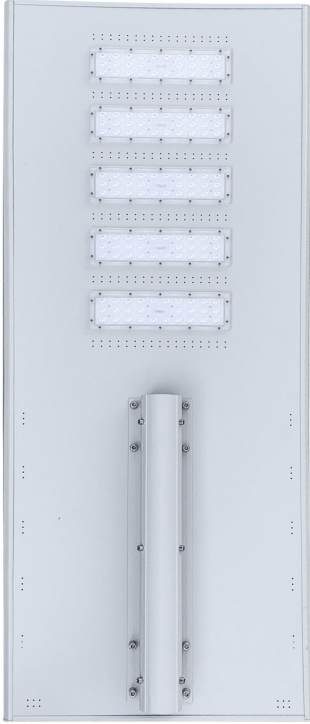


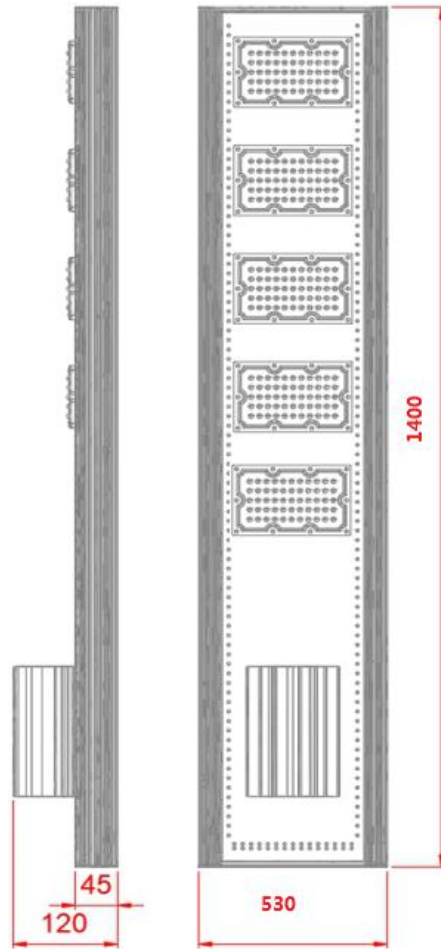
100W Solar Led Street Light Spec

Products Photo

A) Spigots install



Structure drawing



Features

- 1) Integrated design, adopted upgraded MPPT controller to achieve higher solar energy utilization, simplicity, fashion, and practicality;
- 2) Use solar power to save power and protect the earth's resources;
- 3) Use lithium iron phosphate battery/lithium battery to ensure the service life of the product, which can reach 6-8 years without maintenance
- 4) The integrated solar street light no need to wiring , and the installation is extremely convenient, one can be installed in two or three minutes;
- 5) Products structure with waterproof designs, safety and reliable; The modular design concept is adopted, which is convenient for installation, maintenance and repair;
- 6) The reinforced aluminum alloy material #6063 is used as the main body, which has good anti-rust and anti-corrosion functions;;



High Luminous



Solar charging



Large capacity battery



Photocell sensing



Zero Energy Bill



Good protection



Waterproof materials



Timing Dimming

Applications:

It is widely used in urban main and secondary arterial roads, communities, factories, tourist attractions, parking lots, school playgrounds, workers' green spaces, park lighting golf courses, beaches, high-end villa areas and other places.



Technical parameters

Model: MS-YTHST100W-08

Electrical Datas	LEDs	LED/20W/*5	Lumen efficiency	160LM/W
	Photovoltaic	Monocrystalline silicon/36V/150W	1 time Charging Full time	4-6H
	Battery	25.6V/30Ah-LiFePO4	Photoelectric conversion efficiency	>95%
	Cable	RVV 2*2mm ²	Voltage	3.2V
	Controller	MPPT-M2410	CRI	≥70Ra
	Lighting Mode	1 st	100%	3H
		Secondly	50%	3H
Thirdly		25%	4H	
Performance parameter	Operating temperature	-40°C ~ 70°C	Working humidity	5% ~ 90%
	Maintaining working for Cloudy and rainy days	3 ~ 5Days	Protect rating	IP65
	LED Chip	Philips 5050		
	Photovoltaic Panel	Monocrystal 156*156 ^{1/2} 32C1B transfer efficiency>22% lifetime>20Years		
	Battery	LiFePO4 32700 Built-in protection Built-in protection Lifetime>2000times		
	Controller	Photocell sensor + Timing + battery with low voltage protection		
Heat Sink	Housing Material	6063 Aluminum alloy housing		
	Beam Angle	150*80°		
Dimensions and weight	Lamp dimensions	1400*530*45MM		
	Packing size	Body:14500*615*130 MM/Spigots 565*285*430mm		
	Net Weight	Body:20KG/Spigots:1.5kgs	Gross weight	Body:22KG/Spigots:8pcs 12.7kgs

Intelligent lighting control

Automatically charge during the day time and
light up at night
No need to operate, intelligently respond to all
weather changes

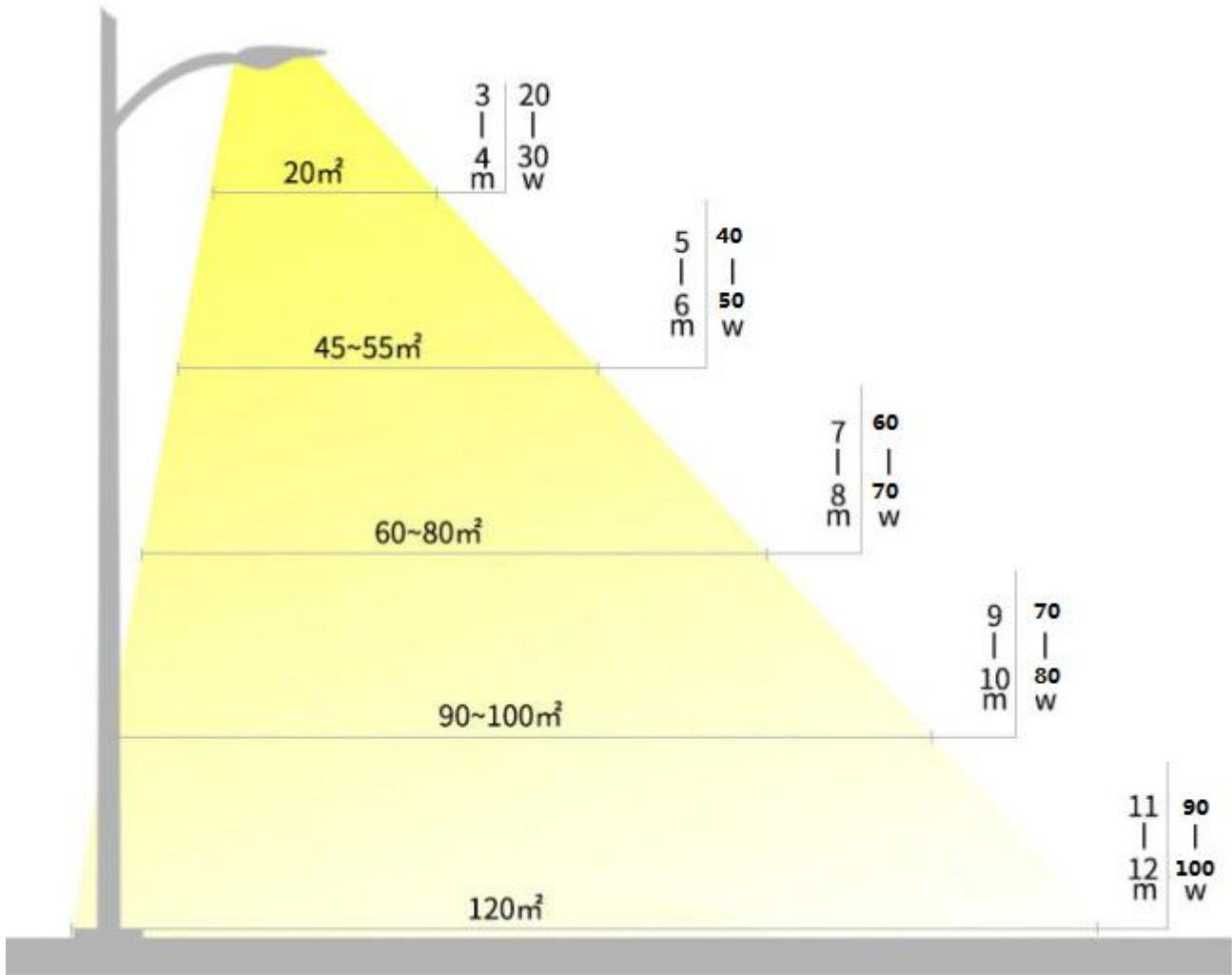


Daytime



Night

Wattage Recommendation



Mosun Warranty Policy

All products are under 5-year warranty since the date of luminaires were deliver to you.

1. Under warranty terms,if products are broken down under normal usage within warranty period,Mosun company will provide new lamp for instead of or provide FREE Maintenance service base on the proof-documents and invoice (copy) of the failed products.
2. Mosun company will not provide paid maintenance service under following conditions even within warranty period.
 - a)Failure or damage caused by force majeure.
 - b) Failure or damage caused by transportation or unloading
 - c) Failure or damage caused by incorrectly usage or fail to comply with the manual and caution
 - d) Failure or damage caused by demolition, repair or alternation without our authorization.
3. Mosun company always reserves the right for final explanation of aforesaid terms

