

# SQ Series LED Stadium Light



## Modular LED Flood Light

UGR < 19

CCC CE CB DALI IP66 LM80



- High-quality aluminum alloy, with integrated shell, high hardness, good heat dissipation, greatly improving service life.
- The lamp body is completely sealed and work in thunder and rain.
- High-quality high-brightness LED light source, high luminous efficiency, high color rendering, no radiation pollution, long service life.
- No EMI, low harmonic distortion (THD), through the CE, ROSS, FCC, SAA, RCM certification requirements.

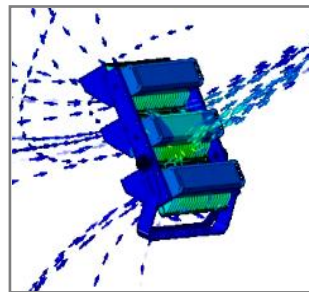
### New Cup reflector design:

1. The reflector cup has a better UGR anti-glare effect because the light source is deeper and the cut-off angle is larger.
2. The reflector cup has a higher effective luminous flux and the light utilization rate of the lamp is higher.
3. There is no color deviation caused by lens refraction, so the color temperature of the light spot will be more consistent, the color rendering index will be higher, and the light spot will be clearer.

## Overview



- LED Source: lumileds 5050 Chip LED
- Input Vol: AC100-277V
- SPD:10KV & 20KV
- CRI: >75Ra
- IP Rate: IP66
- Warranty: 5 years
- Beam angle: 15° /24° /36° /45° /60°



### PMMA Lens:

New optical lens, high light efficiency, UGR <19.

### Visor:

Anti-glare , less lighting pollution

### convection cooling:

Air convection cooling design.

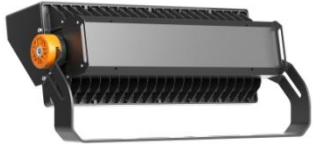
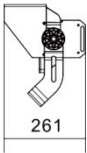
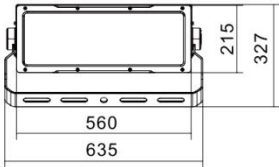
### Mounting arm:

0-180° adjustable

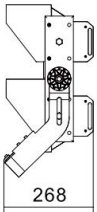
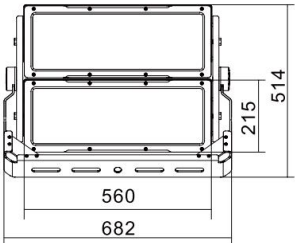
Model	Power	Luminous efficiency	CCT
MS-LTU250W-SQ01	250W	140lm/150lm	2700-6500K
MS-LTU300W-SQ02	300W	140lm/150lm	2700-6500K
MS-LTU500W-SQ03	500W	140lm/150lm	2700-6500K
MS-LTU600W-SQ04	600W	140lm/150lm	2700-6500K
MS-LTU750W-SQ05	750W	140lm/150lm	2700-6500K
MS-LTU1000W-SQ07	1000W	140lm/150lm	2700-6500K
MS-LTU1200W-SQ08	1200W	140lm/150lm	2700-6500K

# Production dimensions

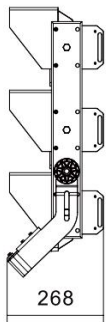
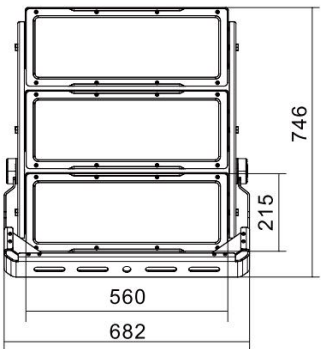
## 250W/300W



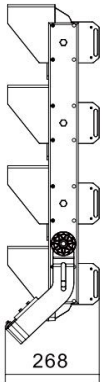
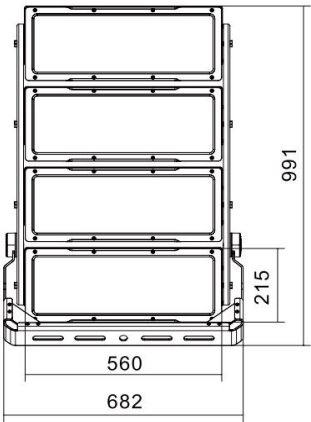
## 500W/600W



## 750W/900W




## 1000W/1200W







## Products Electrical Paraments

				Nominal flux (lm) (*)	Power consumption (W)	Nominal efficacy (lm/W)	Luminaire output flu(lm)	Luminaire efficacy (lm/W)	Photometry
Lamp	5050 LEDs	Current (mA)	Line Current (A)	(A) Typical	Typical	Typical	Typical	Typical	KingBrite T3
1 module	108	4700	1.12	46000	250W	184	37750	151	KingBrite T3
	108	6300	1.38	54900	300W	183	45000	150	
2 module	216	9450	2.24	92000	500W	184	75500	151	
	216	11300	2.68	109200	600W	182	89400	149	
3 module	324	14100	3.36	136500	750W	182	111000	148	
	324	17000	4.02	164700	900W	183	135000	150	
4 module	432	18800	4.54	179000	1000W	179	147000	147	
	432	22600	5.36	216000	1200W	180	177600	148	

Tolerance on LED flux is  $\pm 7\%$  and on total luminaire power  $\pm 5\%$

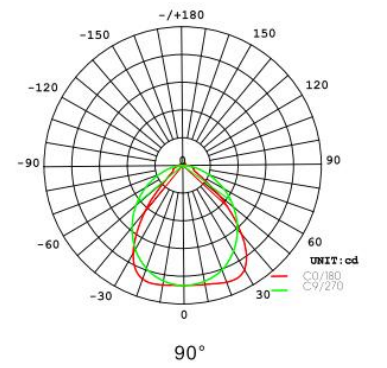
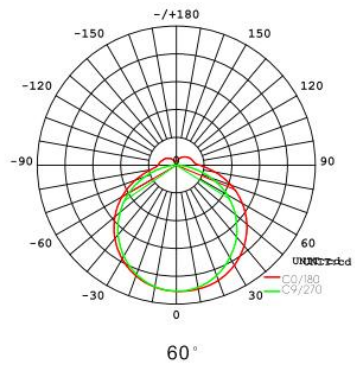
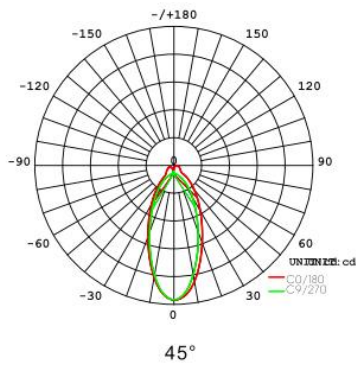
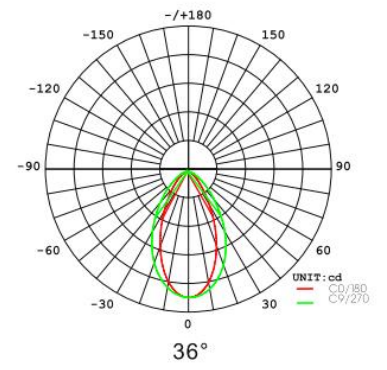
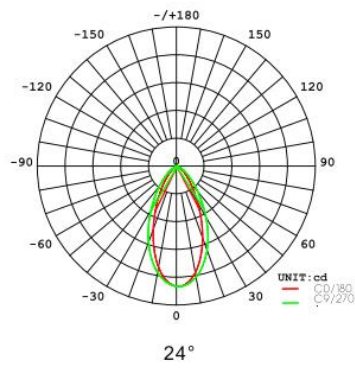
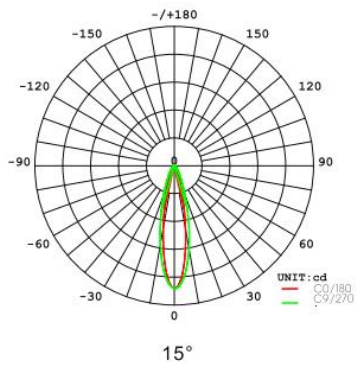
(\*) The nominal flux is an indicative LED flux @ Ts 85° C based on LED manufacturer's data. The real flux output of the luminaire depends on environmental conditions (e.g. temperature and pollution) and the optical efficiency of luminaire. The type of LED used is subject to change due to the ongoing rapid progress taking place in LED technology

## Photometric distribution

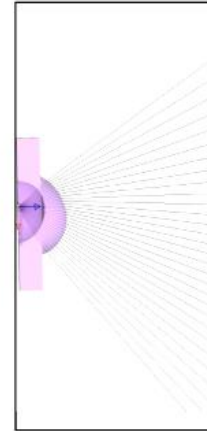
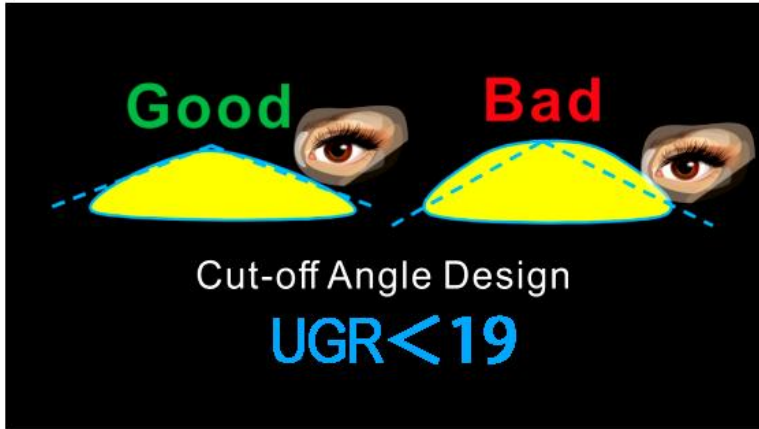
### Optics

Tech.Support: Tell us the room length, width, height and the usage.

We have an engineer team to respond the DIALUX simulations for lights quantity calculation and effects. ies files are available upon request.



Photometric

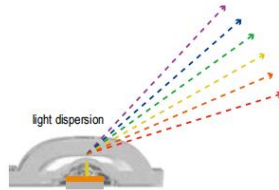
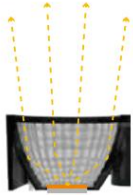


## Advantages of the new lens over conventional lenses

### 3. Good light color consistency

New Lens: There will be no degradation of light color quality due to material problems;

Traditional lens: Due to the characteristics of the material, when light is refracted, dispersion is very likely to occur, i.e., the refractive index changes with the wavelength of the light, which leads to light color deviation;



### 4. High color rendering index

New Lens: There will be no degradation of light color quality due to material problems;

Traditional lens: Due to the characteristics of the material, the color of the light may deviate, resulting in a slight reduction in the ability to reproduce the true color of the object;



Colour rendering of new lenses



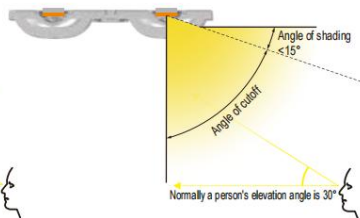
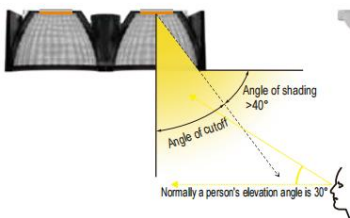
Colour rendering of conventional lenses

### 1. Low glare, GR<19

Note: The larger the shadow angle, the less the effect on the human eye.

New Lens: Deep mounted light control design with added large shading angle technology to reduce the possibility of glare when customers see the luminaire lit in the application;

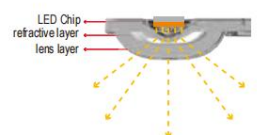
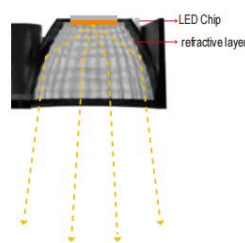
Traditional lens: the light source and the lens are basically on the same level, although the light is refracted, the shading angle is still too small, so the flare will be larger.



### 2. High light utilization rate

New lens: the light emitted from the light source only needs to be refracted once to get the corresponding angle, low light energy loss;

Traditional Lens: The light emitted from the light source must pass through more than 2 layers of material to reach the corresponding angle, the more layers of material the light penetrates, the more serious the loss of light energy;



## Dissamble illustration

Iron back cover

Famous brand LED driver is adopted to achieve stable performance of the luminaire.

Angle adjustable iron bracket.

High efficiency aluminum PCB to keep higher lumen maintenance rate.

5050SMD light source

Anti-yellowing optical PC lenses(/reflectors optional)

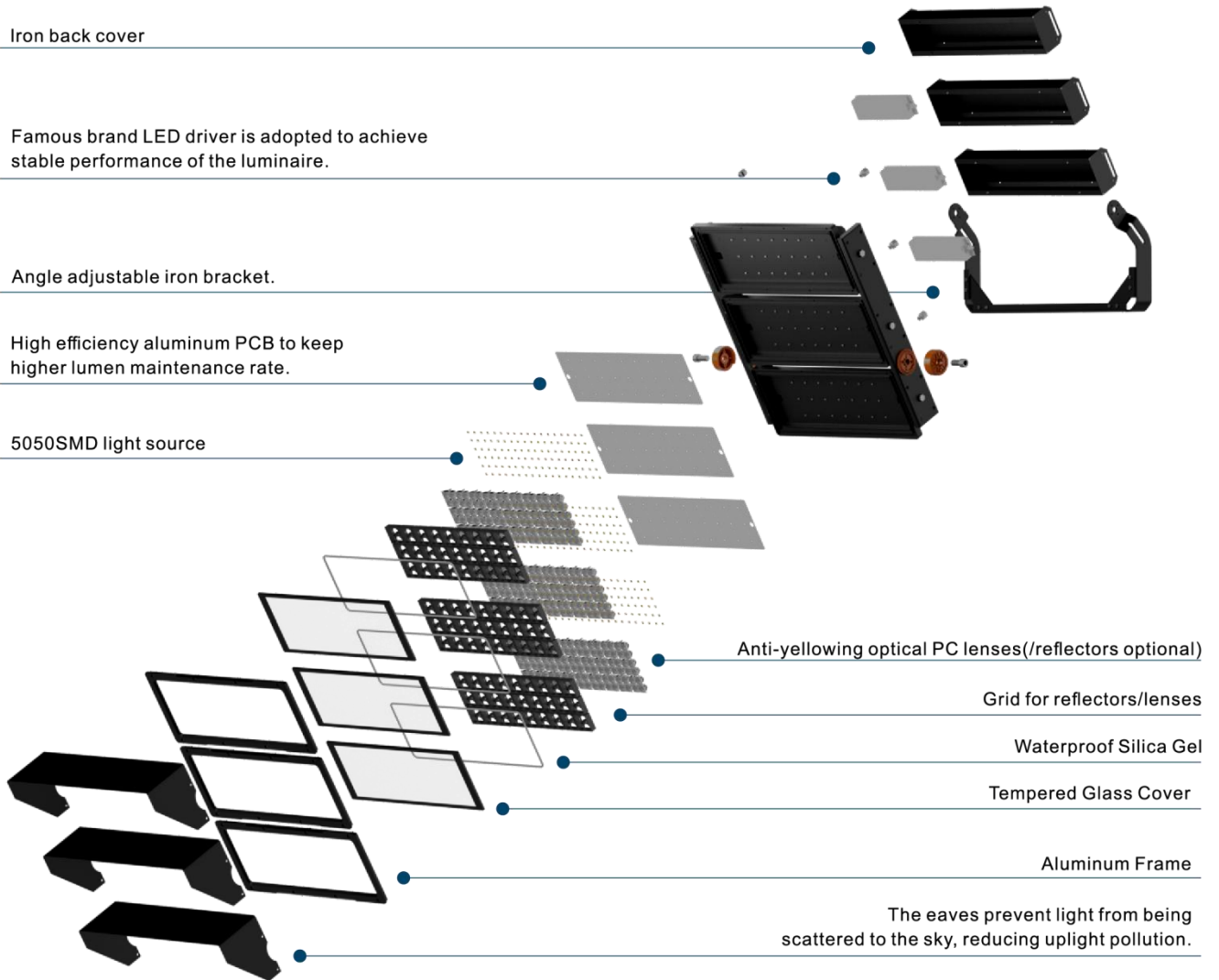
Grid for reflectors/lenses

Waterproof Silica Gel

Tempered Glass Cover

Aluminum Frame

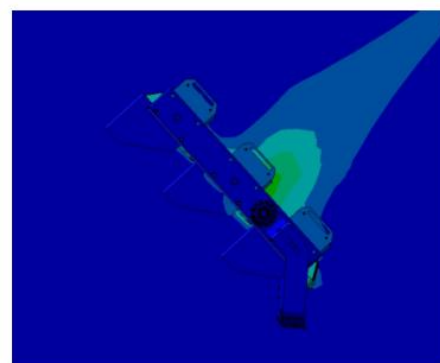
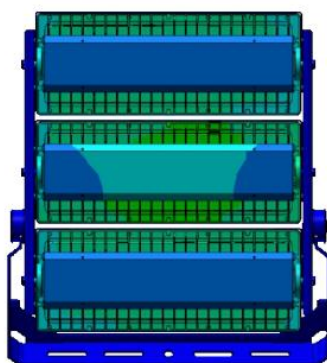
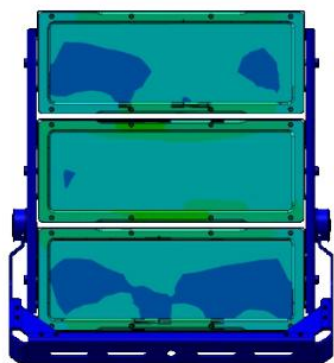
The eaves prevent light from being scattered to the sky, reducing uplight pollution.





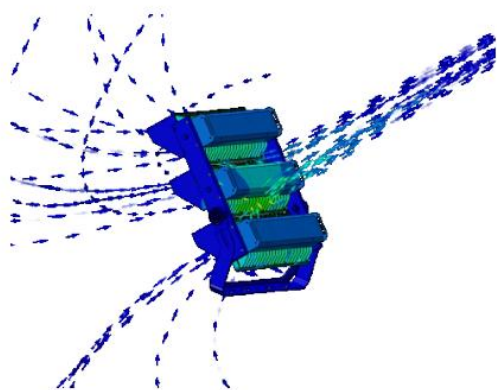
# Thermal management

Structure is optimized by advanced FEA technology. Achieving longer lifespan at best cost-efficiency.

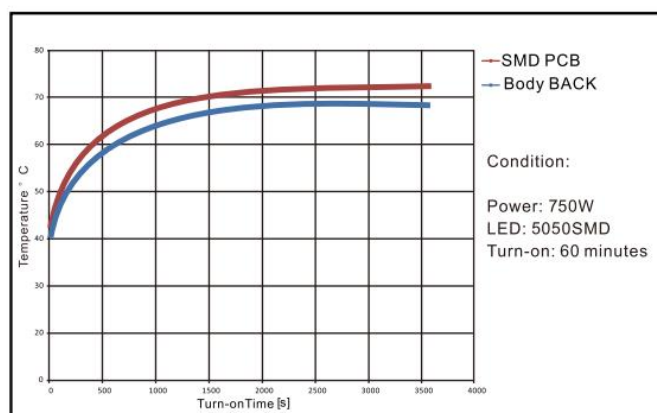


Thermal Conductivity

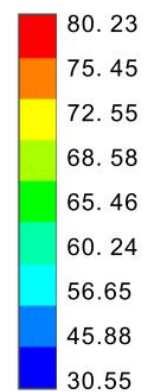
Thermal Air Flow



Thermal Air Convection



Temperature Rise Curve



Unit: °C

## Breathing valve Optional:



- Waterproof
- Air circulation
- Pressure balance

## LED Driver brand optional:

- Mosun Factory own brand
- Meanwell
- Philips
- Inventronics

**TURE FULL**

**MW**  
MEAN WELL

**PHILIPS**

**INVENTRONICS**  
DRIVING THE LIGHTING REVOLUTION

## Surge protection Optional:

- SPD 10KV
- SPD 20KV



## Features

- ◆ Suitable for use in luminaire with Class I or Class II installations
- ◆ Protection mode : L-N, L-PE, N-PE
- ◆ Built-in thermal detachment function, higher security
- ◆ Parallel wiring, easy maintenance
- ◆ Excellent impact resistance, low voltage limit
- ◆ Built-in LED indication, saves maintenance time by identifying replacement need
- ◆ IP67-Dust-tight and water resistant

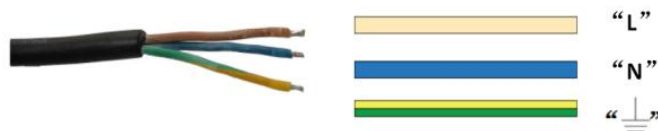
## Package

Item	MS-LTU250W-SQ01	MS-LTU300W-SQ02	MS-LTU500W-SQ03	MS-LTU600W-SQ04	MS-LTU750W-SQ05	MS-LTU1000W-SQ07	MS-LTU1200W-SQ08
Package Qty	1 PC	1 PC	1 PC	1 PC	1 PC	1 PC	1 PC
GW	12.5 KGS	12.7KGS	26KGS	26.3KGS	37.8KGS	47.7KGS	48.1KGS
Cartons (mm)	660*370*270MM	660*370*270MM	720*555*270MM	720*555*270MM	785*720*270MM	1030*720*270MM	1030*720*270MM



## Attention:

- 1) Be sure disconnect power before installing, don't construction with electricity.
- 2) Product working voltage is AC100~277V,50/60Hz, Please do not exceed the working voltage range.
- 3) Input product line, brown is **L**, blue is **N**, yellow-green is **GND**.
- 4) Be sure wiring is closed and prevent leakage, when installing.
- 5) The lamp can not be used in violation of any fire regulations.



## Installation methods



Floor Mounted



Ceiling Mounted



Wall Mounted



Pole Mounted

## Mosun Warranty Policy

All products are under 5-year warranty since the date of luminaires were deliver to you.

1. Under warranty terms,if products are broken down under normal usage within warranty period,Mosun company will provide new lamp for instead of or provide FREE Maintenance service base on the proof-documents and invoice (copy) of the failed products.
2. Mosun company will not provide paid maintenance service under following conditions even within warranty period.
  - a )Failure or damage caused by force majeure.
  - b) Failure or damage caused by transportation or unloading
  - c) Failure or damage caused by incorrectly usage or fail to comply with the manual and caution
  - d) Failure or damage caused by demolition, repair or alternation without our authorization.
3. Mosun company always reserves the right for final explanation of aforesaid terms