

YZ Series Solar LED street light



Features.:

- Integrated design, making full use of solar resources, simple, stylish, light, and extremely convenient to install. The integrated solar street light does not need to be pulled, and two or three people can install one in ten minutes. It provides a variety of installation methods. The lamp post is made from local materials. Iron pillars, wood, bamboo, plastic, etc., low cost;
- Using solar power supply and LED lighting, the two solutions are perfectly combined to save electricity, protect the earth's environment, and save energy;
- Large-capacity and long-life lithium iron phosphate battery is adopted, with a theoretical service life of 5 years, good high-temperature characteristics and long service life, ensuring the service life of the entire product;
- Alloy material is used as the main structure, which has good anti-rust and anti-corrosion functions; rainproof structure, safe and reliable
- Built-in with PIR sensor, when someone approaches, the light will be fully on for 60 seconds. When the person walks away, the light will automatically reduce to 50% brightness, effectively saving electricity energy.

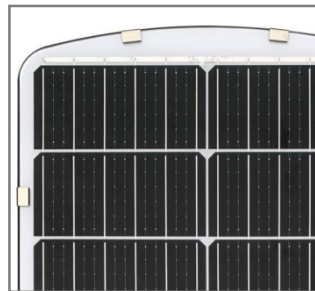
Use: This product is easy to use, with one-button operation, as long as the switch is turned on, the product can work normally without adjustment.

Note: 1. Do not disassemble the product without the guidance of our technical personnel;
2. When installing the product, try to avoid trees, buildings, etc.

Overview



- Protection Rating: IP65
- LEDs: LUXEON 5050 Chip
- Efficiency (whole lamp): 180-190 LM/W
- Control: Timing/PIR/Microwave optional
- Body: Surface anti-corrosive treatment



Battery:

Large capacity, lithium iron phosphate battery

Solar Panel:

Monocrystalline silicon panels, faster conversion of electrical energy

Optic Lens:

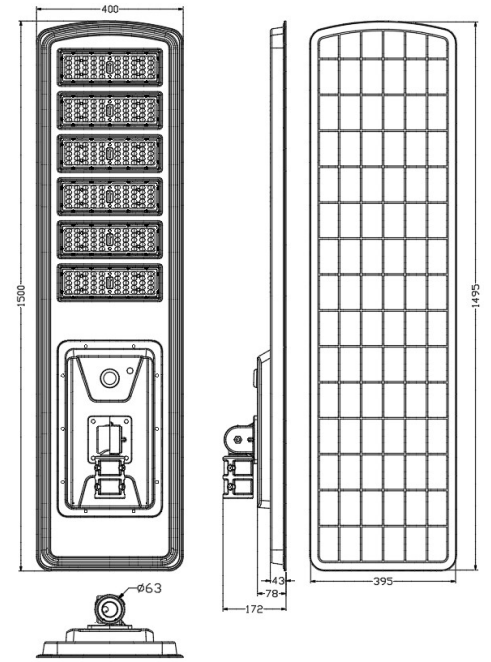
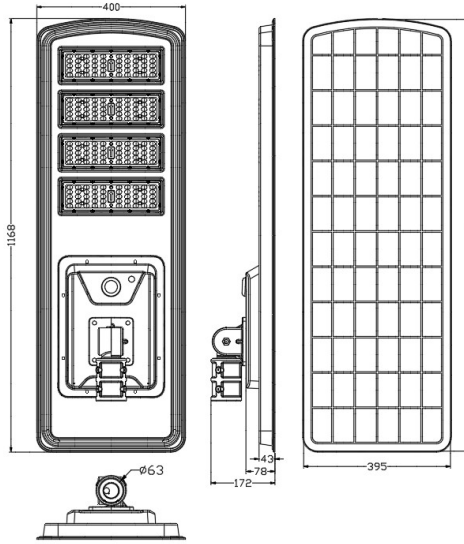
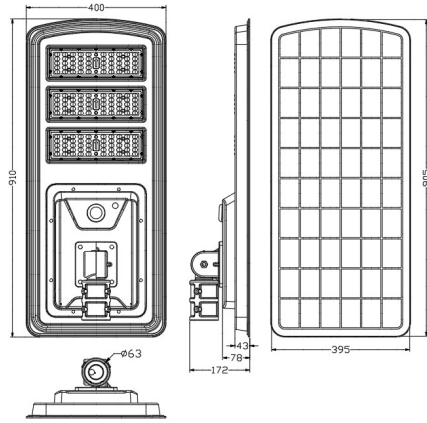
High light transmittance PC cover, more uniform refraction of light, better light transmittance

Lamp Housing:

Integrally Die-casting housing has better heat dissipation

| Model | Housing Dimensions(mm) | Housing Net weight | Suitable for Wattage |
|-----------|------------------------|--------------------|----------------------|
| 3 Modules | 910x400x172 | 11.2KGS | 30w,40w |
| 4 Modules | 1168x400x172 | 13.4KGS | 50w,60w |
| 6 Modules | 1500*400*172 | 17.8KGS | 80w |

Production dimensions



30/40 W

50/60 W

80 W



Products Characteristics

| | | | | | |
|-----------------------------------|---|---|--|--|--|
| Model: | MS-YTHST30W-YZ01 | MS-YTHST40W-YZ02 | MS-YTHST50W-YZ03 | MS-YTHST60W-YZ04 | MS-YTHST80W-YZ05 |
| Mono solar panel: | 18V 80W High-efficiency single crystal silicon | 18V 80W High-efficiency single crystal silicon | 18V 100W High-efficiency single crystal silicon | 18V 100W High-efficiency single crystal silicon | 18V 120W High-efficiency single crystal silicon |
| Battery capacity: | 12.8V/18Ah-LiFePO4 batteries | 12.8V/24Ah-LiFePO4 batteries | 12.8V/30Ah-LiFePO4 batteries | 12.8V/36Ah-LiFePO4 batteries | 12.8V/48Ah-LiFePO4 batteries |
| LED Chips: | Lumileds 5050 chip 50PCS*3 | Lumileds 5050 chip 50PCS*3 | Lumileds 5050 chip 50PCS*4 | Lumileds 5050 chip 50PCS*4 | Lumileds 5050 chip 50PCS*6 |
| CCT: | 3000K-6000K | 3000K-6000K | 3000K-6000K | 3000K-6000K | 3000K-6000K |
| Brightness: | 180-190LM/W | 180-190LM/W | 180-190LM/W | 180-190LM/W | 180-190LM/W |
| luminous flux | 5400-5600LM | 7200-7500LM | 9000-9500LM | 10800-11200LM | 14400-15200LM |
| Beam angle: | TYPE2 | TYPE2 | TYPE2 | TYPE2 | TYPE2 |
| Charging Time: | 6~8 hours by bright sunlight | 6~8 hours by bright sunlight | 6~8 hours by bright sunlight | 6~8 hours by bright sunlight | 6~8 hours by bright sunlight |
| Working Time: | 12-15 hours (5-7 rainy days) | 12-15 hours (5-7 rainy days) | 12-15 hours (5-7 rainy days) | 12-15 hours (5-7 rainy days) | 12-15 hours (5-7 rainy days) |
| Control Mode: | Timing/PIR/Micro wave optional | Timing/PIR/Microwave optional | Timing/PIR/Microwave optional | Timing/PIR/Microwave optional | Timing/PIR/Microwave optional |
| IP Rating: | IP65 | IP65 | IP65 | IP65 | IP65 |
| Mounting Height: | 6-8M | 7-9M | 8-10M | 9-12M | 10-12M |
| Installing space between 2 Lamps: | 15-20M | 20-25M | 20-30M | 20-30M | 25-30M |
| Mounting hole: | Φ63mm | Φ63mm | Φ63mm | Φ63mm | Φ63mm |
| Housing Finish: | Polyester powder coating | Polyester powder coating | Polyester powder coating | Polyester powder coating | Polyester powder coating |
| Standard colour(s): | Silver | Silver | Silver | Silver | Silver |
| Materials: | Aluminum Alloy+Polycarbonate | Aluminum Alloy+Polycarbonate | Aluminum Alloy+Polycarbonate | Aluminum Alloy+Polycarbonate | Aluminum Alloy+Polycarbonate |
| Working temperature: | -20 °C ~ +70 °C | -20 °C ~ +70 °C | -20 °C ~ +70 °C | -20 °C ~ +70 °C | -20 °C ~ +70 °C |
| Body Color: | Silver Gray | Silver Gray | Silver Gray | Silver Gray | Silver Gray |
| Certificates: | CE/RoHS | CE/RoHS | CE/RoHS | CE/RoHS | CE/RoHS |
| Warranty: | 5 years | 5 years | 5 years | 5 years | 5 years |

Intelligent lighting control

Automatically charge during the day time and light up at night

No need to operate, intelligently respond to all weather changes



Daytime



Night

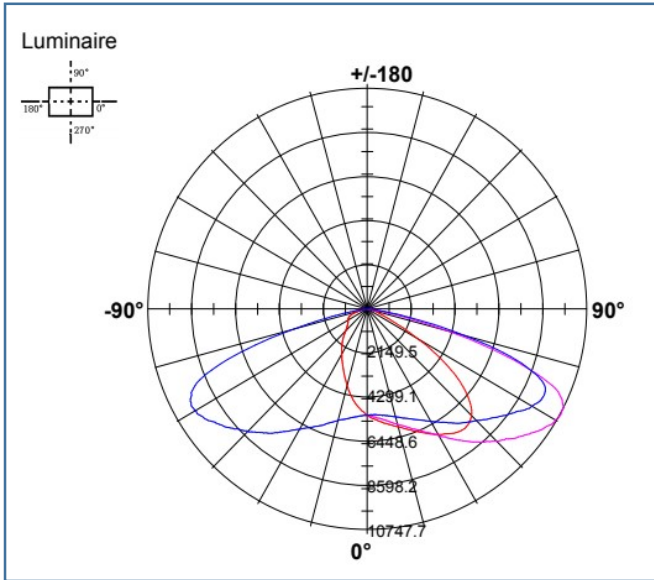
Inductive mode

The LED lights up 100% when the person enters the sensing area and 30% after the person leaves the sensing area.



Photometric Distribution

Type II

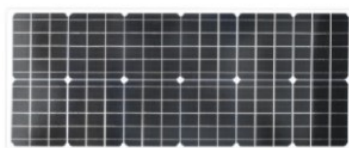


How Solar Works

High charging efficiency controller

Can automatically adjust the output power according to weather changing.

Qualification rate 99.5%



Solar panel



Lithium battery

High charging efficiency controller



Lithium battery

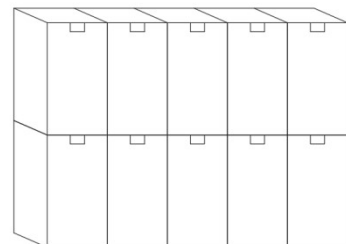
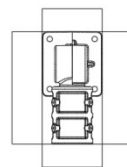
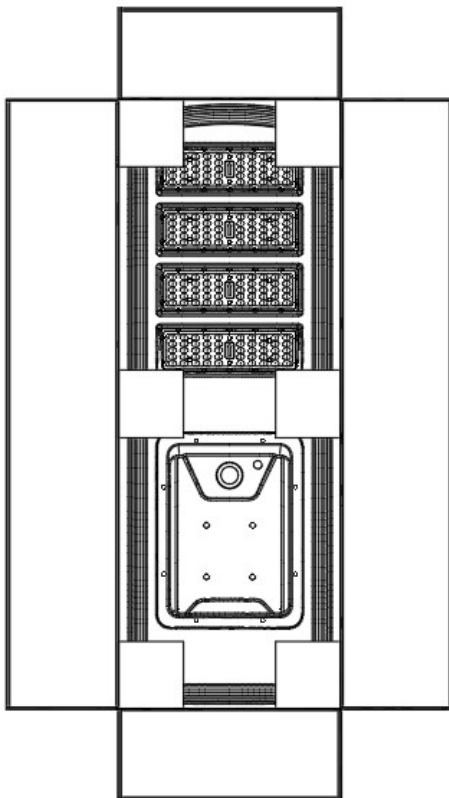
Can work at temperatures from -20°C to +55°C

Lithium iron phosphate (LiFePO₄) battery >2000 cycles

Package

| Item | MS-YTHST30W-YZ01 | MS-YTHST40W-YZ02 | MS-YTHST50W-YZ03 | MS-YTHST60W-YZ04 | MS-YTHST80W-YZ05 |
|----------------------|------------------|------------------|------------------|------------------|------------------|
| Package Qty | 1 PCS | 1 PCS | 1 PCS | 1 PCS | 1 PCS |
| GW | 14.1 KG | 14.3 KG | 15.2 KG | 15.5 KG | 19.7 KG |
| Carton(mm) (Lamp) | 920*420*200MM | 920*420*200MM | 1300*420*200MM | 1300*420*200MM | 1520*420*200MM |

| Adapter arm | |
|-------------------|---------------|
| Package Qty | 10 PCS |
| NW | 0.8 KG |
| GW | 11 KG |
| Inner Box(mm) | 215*130*90MM |
| Master Carton(mm) | 700*450*210MM |



APPLICABLE TO VARIOUS USAGE SCENARIOS

