

FT Series Solar LED street light



SOLAR STREET LIGHT

Solar lights are electric lamps that convert solar panels into electrical energy. During the day, even on cloudy days, this solar generator (solar panel) can collect and store solar energy. Solar lights, as a safe and environmentally friendly new type of electric light, are increasingly being valued.

Features.:

- Integrated design, making full use of solar resources, simple, stylish, light, and extremely convenient to install. The integrated solar street light does not need to be pulled, and two or three people can install one in ten minutes. It provides a variety of installation methods. The lamp post is made from local materials. Iron pillars, wood, bamboo, plastic, etc., low cost;
- Using solar power supply and LED lighting, the two solutions are perfectly combined to save electricity, protect the earth's environment, and save energy;
- Large-capacity and long-life lithium iron phosphate battery is adopted, with a theoretical service life of 5 years, good high-temperature characteristics and long service life, ensuring the service life of the entire product;
- Alloy material is used as the main structure, which has good anti-rust and anti-corrosion functions; rainproof structure, safe and reliable
- Built-in with PIR sensor, when someone approaches, the light will be fully on for 60 seconds. When the person walks away, the light will automatically reduce to 50% brightness, effectively saving electricity energy.

Use: This product is easy to use, with one-button operation, as long as the switch is turned on, the product can work normally without adjustment.

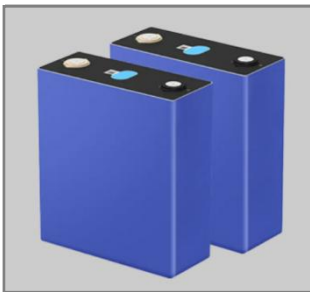
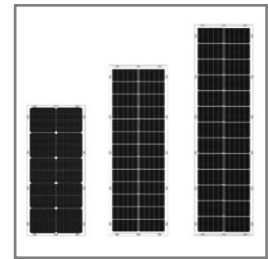
Note: 1. Do not disassemble the product without the guidance of our technical personnel;

2. When installing the product, try to avoid trees, buildings, etc.

Overview

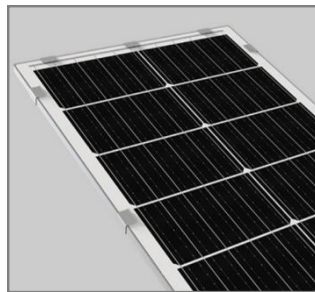


- Protection Rating: IP66
- LEDs: Lumileds 3030 Chips
- Efficiency(whole lamp): 180LM/W
- Control: Timing/PIR/Microwave optional
- Lamp Material: Die-cast aluminum with galvanized process.



Battery:

New lithium iron carbonate battery, long life, not easy to heat out of control, safer in high temperature environment.



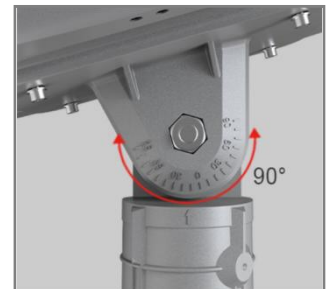
Solar Panel:

Monocrystalline silicon photovoltaic panels with high conversion efficiencies of up to 21%.



High brightness LED beads:

Adopting high brightness LED lamp beads, high brightness, long life, high apparent finger, low light decay.



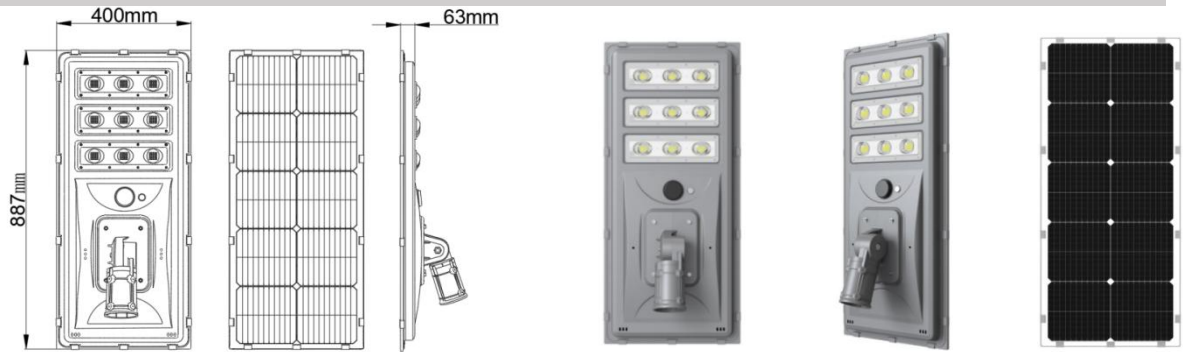
Adjustable mounting arm:

Adjustable 90-degree swivel, removable design, easy to install.

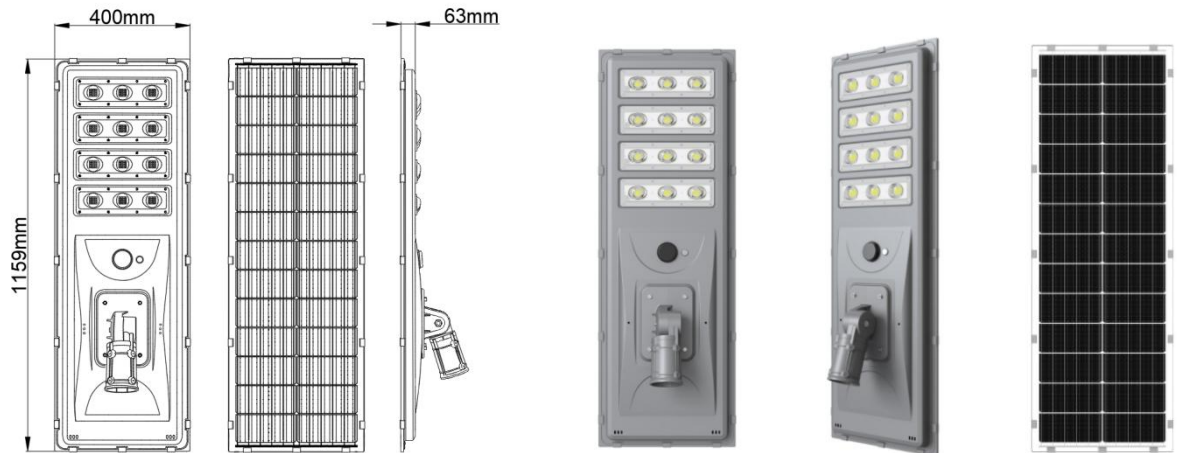
Model	Brightness	Housing Net weight	Suitable for Wattage
3 Modules	180 LM/W	9.2 KGS	20W
4 Modules	180 LM/W	10.7 KGS	30W
5 Modules	180 LM/W	15.2 KGS	40W

Production dimensions

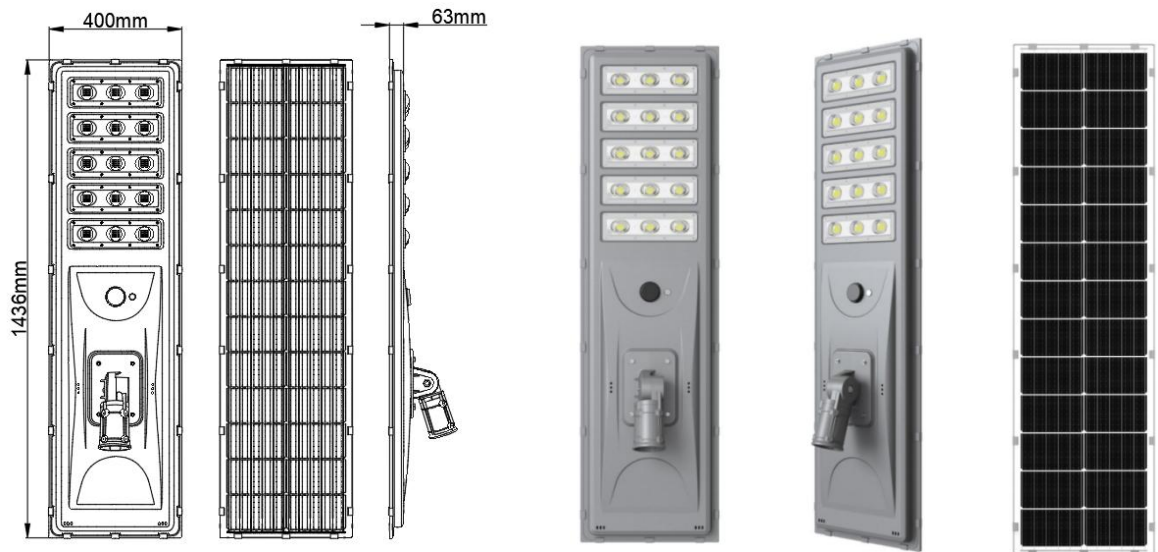
MS-YTHST65W-FT01



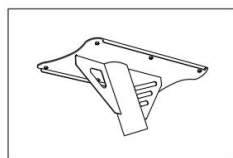
MS-YTHST85W-FT02



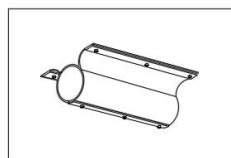
MS-YTHST105W-FT03



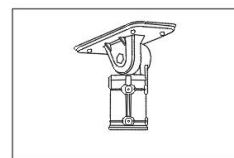
Installation of the arm



Ø63/78mm



Ø63/78mm



Ø63mm

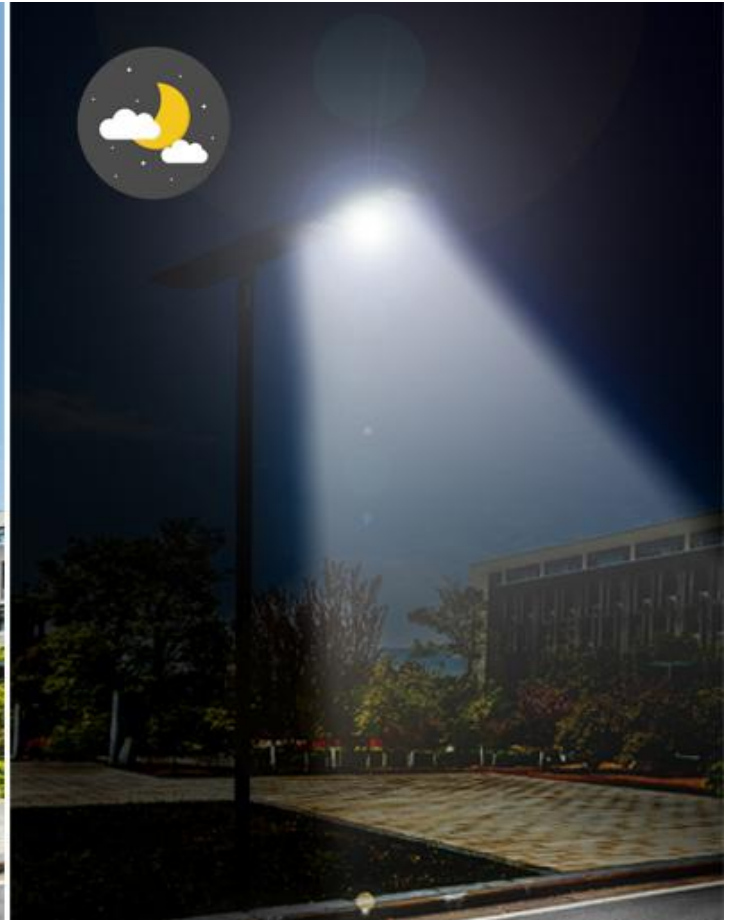
Products Characteristics

Model:	MS-YTHST65W-FT01	MS-YTHST85W-FT02	MS-YTHST105W-FT03
Mono solar panel:	6V 65W	6V 85W	6V 105W
Battery capacity:	3.2V 52AH	3.2V 65AH	3.2V 90AH
Photovoltaic panel size:	882*396mm	1154*396mm	1431*396mm
Led Source:	Lumileds 3030	Lumileds 3030	Lumileds 3030
Led Qty:	135 PCS	180PCS	225 PCS
CCT:	2700K-6500K	2700K-6500K	2700K-6500K
Brightness:	180LM/W	180LM/W	180LM/W
luminous flux	3600LM	5400LM	7200LM
Charging Time:	5-6 hours by bright sunlight	5-6 hours by bright sunlight	5-6 hours by bright sunlight
Working Time:	10-12 hours (3-4 rainy days)	10-12 hours (3-4 rainy days)	10-12 hours (3-4 rainy days)
Control Mode:	Time control + Microwave induction or Infrared induction	Time control + Microwave induction or Infrared induction	Time control + Microwave induction or Infrared induction
IP Rating:	IP66	IP66	IP66
Mounting Height:	6-7M	7-8M	8-10M
Installing space between 2 Lamps:	10-15M	10-15M	15-20M
Mounting hole:	Φ63/78mm	Φ63/78mm	Φ63/78mm
Housing Finish:	Polyester powder coating+Galvanizing process	Polyester powder coating+Galvanizing process	Polyester powder coating+Galvanizing process
Materials:	Aluminum Alloy+Polycarbonate	Aluminum Alloy+Polycarbonate	Aluminum Alloy+Polycarbonate
Body Color:	Gray	Gray	Gray
Certificates:	CE/RoHS	CE/RoHS	CE/RoHS
Warranty:	5 years	5 years	5 years

Intelligent lighting control

Automatically charge during the day time and light up at night

No need to operate, intelligently respond to all weather changes



Product Advantages

1. High lumen, brightness increased by 30%

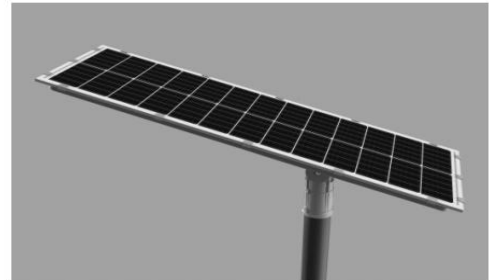
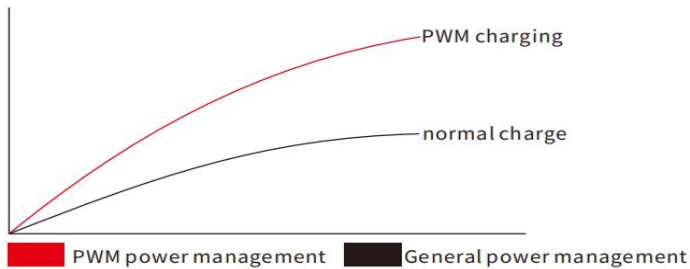
This product adopts LED optical lens design, which can effectively concentrate the light from the light source, improve brightness, reduce light loss, and improve the light efficiency by more than 20% compared to ordinary lenses. At that time, the lenses of the product were made of PC UV resistant and fire-resistant materials, with a processed light transmittance of up to 92%, much higher than the 80% of glass; Overall lighting efficiency increased by 30%, illuminated area increase by more than 25%.



Note: The lens of this product can be used normally within the high temperature range of 125 °C and the low temperature range of -40 °C. The lens will not turn yellow or brittle within 5 years. This material has passed multiple international certifications.

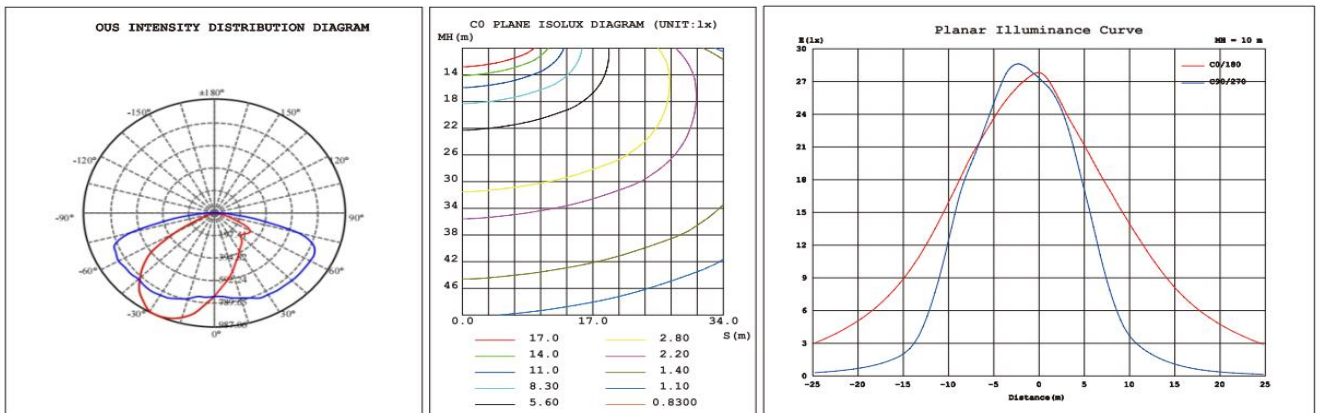
2. P-Mos charging increases charging efficiency by 20%

The conversion efficiency of single crystal photovoltaic panels is relatively high, usually reaching over 15% and up to 20%. The conversion efficiency of polycrystalline photovoltaic panels is relatively low, usually around 13%. The crystal structure of single crystal photovoltaic panels is relatively orderly, with high thermal shock resistance, and can work for a long time in high temperature environments without significant performance degradation. Polycrystalline photovoltaic panels are prone to structural changes in grain size under high temperature conditions, leading to performance degradation. Single crystal photovoltaic panels perform better in low light environments and are suitable for rainy weather or use in areas with shorter daylight hours.



3. Increase the central illumination and expand the coverage of illumination

Through scientific optical design and innovative three lens structure, not only has the central illumination been improved, but the illumination coverage has also been expanded. Through professional optical design, we have adopted the 80 * 170 ° optical lens has a 25% larger illuminated surface area than the traditional 120 degree illumination angle when installed at the same height.



Caveat

Ensure that the solar panels are mounted in the correct orientation and are not obstructed by buildings, trees, etc.



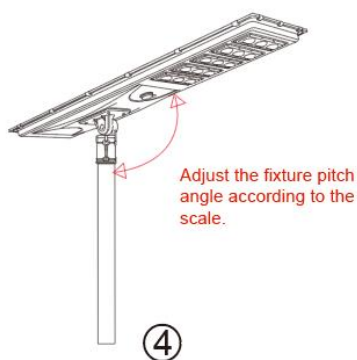
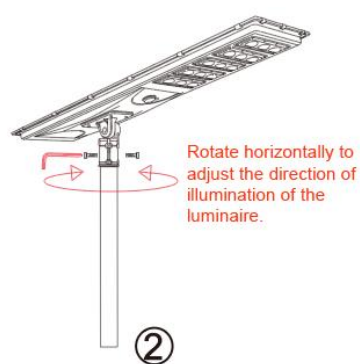
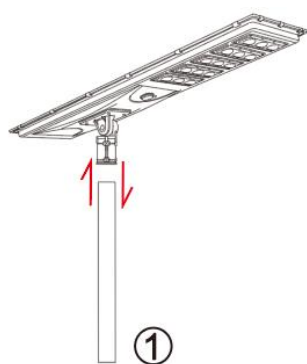
Optimal charging efficiency



Low charging efficiency

1. Please do not connect 220V AC power to avoid damage to the solar lights.
2. Please fasten the lamp head and solar panel to prevent.
3. Please don't disassemble the solar light at will, so as not to affect the warranty.
4. Clean the surface of the solar panels every 3 months to avoid affecting the power generation efficiency.
- 5, solar street lamps of all devices in the installation process should not be scratched, bumping.
- 6, all screws terminal, etc. should be tightened, there can be no loosening, the connection should be reliable.

Installation Schematic





Package

Lamp Packaging

Item	MS-YTHST65W-FT01	MS-YTHST85W-FT02	MS-YTHST105W-FT03
Package Qty	2 PCS	2 PCS	2 PCS
GW	18 KG	26 KG	31 KG
Carton(mm) (Lamp)	910*410*160MM	1180*410*160MM	1460*410*160MM

Mounting Arm Packaging

Item	
Package Qty	2 PCS
NW	1.2 KG
GW	2.5 KG
Carton(mm) (Lamp)	345*225*110MM

Application

It is widely used in urban main and secondary arterial roads, communities, factories, tourist attractions, parking lots, school playgrounds, workers' green spaces, park lighting golf courses, beaches, high-end villa areas and other places.



Mosun Warranty Policy

All products are under 5-year warranty since the date of luminaires were delivered to you.

1. Under warranty terms, if products are broken down under normal usage within warranty period, Mosun company will provide new lamp for instead of or provide FREE Maintenance service based on the proof-documents and invoice (copy) of the failed products.

2. Mosun company will not provide paid maintenance service under following conditions even within warranty period.

a) Failure or damage caused by force majeure.

b) Failure or damage caused by transportation or unloading

c) Failure or damage caused by incorrect usage or fail to comply with the manual and caution

d) Failure or damage caused by demolition, repair or alternation without our authorization.

3. Mosun company always reserves the right for final explanation of aforesaid terms

